

Quadratec® Cup Holder Conversion

Installation: for '18 - Current Wrangler JL With Leather Seating #14125.3030



PARTS LIST:

Cup Holder

QTY 1

REQUIRED TOOLS:

Safety Glasses

10mm Socket & Driver

T-20 Torx Driver

Small Flat Blade Screwdriver

Forked Clip/Trim Removal Tool

⚠ CAUTION ⚠

READ ALL SAFETY MESSAGES AND UNDERSTAND ALL INSTRUCTIONS BEFORE ATTEMPTING TO INSTALL THIS PRODUCT. ALWAYS WEAR SAFETY GLASSES DURING INSTALL.

Quadratec®
The Jeep® Experts

Before You Begin Installation:

Congratulations on your purchase. When unpacking, check to make sure all parts are included and not damaged due to shipping. If any part is missing or

broken, please call Customer Service at 800-745-6037 as soon as possible. Thank you again for your purchase and let's start the installation process.

⚠ CAUTION ⚠

READ ALL SAFETY MESSAGES AND ALWAYS WEAR SAFETY GLASSES WHEN WORKING WITH TOOLS.

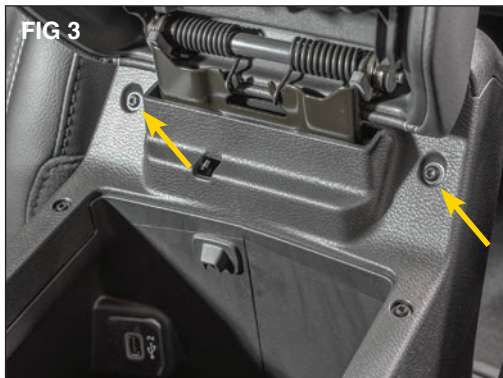
Installation Instructions:



Put on safety glasses. Slide both seats forward. Locate both of the trim panel covers and remove using a trim removal



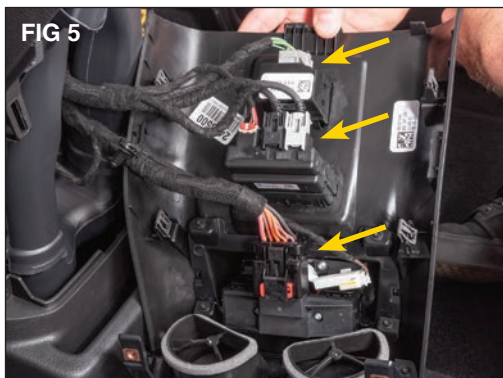
tool. (FIG 1) Remove both bolts using a 10mm socket. (FIG 2)



Lift the center console lid and remove the two screws using a T-20 torx driver. (FIG 3)



Carefully pull backward on the center console vent panel to release the clips. (FIG 4)



Disconnect all wiring harnesses and set panel aside. (FIG 5)

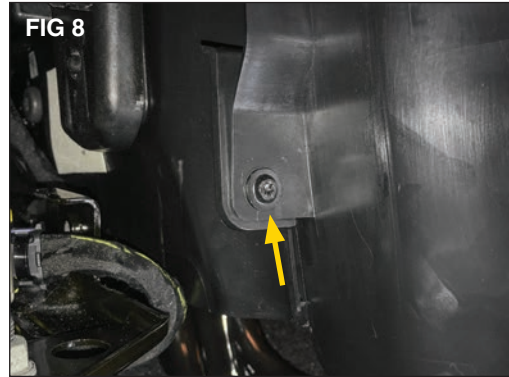


Remove the two screws at the top of lower tray using a T-20 torx driver. (FIG 6)

Installation Instructions:



Carefully lift up the console as much as possible and remove the two remaining screws using a T-20 torx driver.



(FIGs 7 & 8) You can use the new cup holder as a reference for where the holes are located and feel around for them.



Pull back on the tray to release the retaining clips. (FIG 9) Using a small flat



blade screwdriver transfer the metal clips to the new cup holder. (FIG 10)



Install the new cup holder in the reverse order of tray removal.

Clip the cup holder to the console and install the 4 screws. Connect all wiring harnesses to the vent panel, each can only go in it's proper connector, so they cannot be mixed up. Clip the vent panel back to the console and install the upper screws.

(See Installed shot FIG 11)
Installation is now complete.

Quadratec® Exclusive Three Year Limited Warranty

Your Quadratec® branded accessories are covered by the following **Limited Warranty** provided exclusively by Quadratec, Inc., 1028 Saunders Lane, West Chester PA 19380.

This Limited Warranty is the only warranty made in connection with your purchase. Quadratec neither assumes nor authorizes any vendor, retailer or other person or entity to assume for it any other obligation or liability in connection with this product or Limited Warranty. This Limited Warranty does not apply and is not cumulative to any accessory or part distributed by Quadratec for which the Manufacturer provides a separate written warranty.

What is Covered: Subject to the terms, exclusions and limitations herein and with respect only to Quadratec branded accessories first sold in the United States, Quadratec warrants to the initial retail purchaser only that your Quadratec accessory shall be free of defects in material and workmanship: **for a period of three (3) years from date of retail purchase.**

This **Limited Warranty** is not assignable and shall terminate upon sale of the vehicle upon which the Quadratec accessory is installed or other transfer third persons.

All other warranties are hereby disclaimed, except to the extent prohibited by applicable law in which case any implied warranty of merchantability or fitness for a particular purpose on this product is limited to 3 year from date of initial retail sale. Quadratec reserves the rights to: (a.) require invoice or other proof your accessory is within the terms of this **Limited Warranty** as a condition of warranty service and, (b.) make future revisions to this product and **Limited Warranty** without prior notice or obligation to upgrade your product.

What is Not Covered:

Your Quadratec **Limited Warranty** does not cover products or parts Quadratec determines to have been damaged by or subjected to:

(a.) installation damage, alteration, modification, combination with other parts, failure to maintain or improper repair or service, (b.) normal wear & tear, cosmetic damage or damage from moisture or water immersion, (c.) Acts of God, accidents, misuse, negligence, inadequate mounting or impact with vehicle(s), obstacles or other aspects of the environment, (d.) theft, vandalism or other intentional damage.

Remedy Limited to Repair/Replacement: **The exclusive remedy provided hereunder shall, upon Quadratec inspection and at Quadratec's option, be either repair or replacement of product or parts (new or refurbished) covered under this Limited Warranty.** Customers requesting warranty consideration should first contact Quadratec to obtain a RGA number (610-701-3336). All labor, removal, shipping and installation costs are customer's responsibility.

Other Limitations - Exclusion of Damages - Your Rights Under State Law:

In consideration of the purchase price paid, neither Quadratec nor any independent Quadratec distributor/licensee are responsible for any time loss, rental costs, or for any incidental, consequential, punitive or other damages you may have or incur in connection with any part or product purchased. Your exclusive remedy hereunder for covered parts is repair/replacement as described above.

This **Limited Warranty** gives you specific rights. You may also have other rights that vary from state to state. For example, some states do not allow limitations of how long an implied warranty lasts and /or do not allow the exclusion or limitation of incidental or consequential damages, so the limitations and exclusions herein may not apply to you.

©Quadratec, Inc. 2020. All Rights Reserved.
6.11.20 A4 Version

Part #12999.3170

