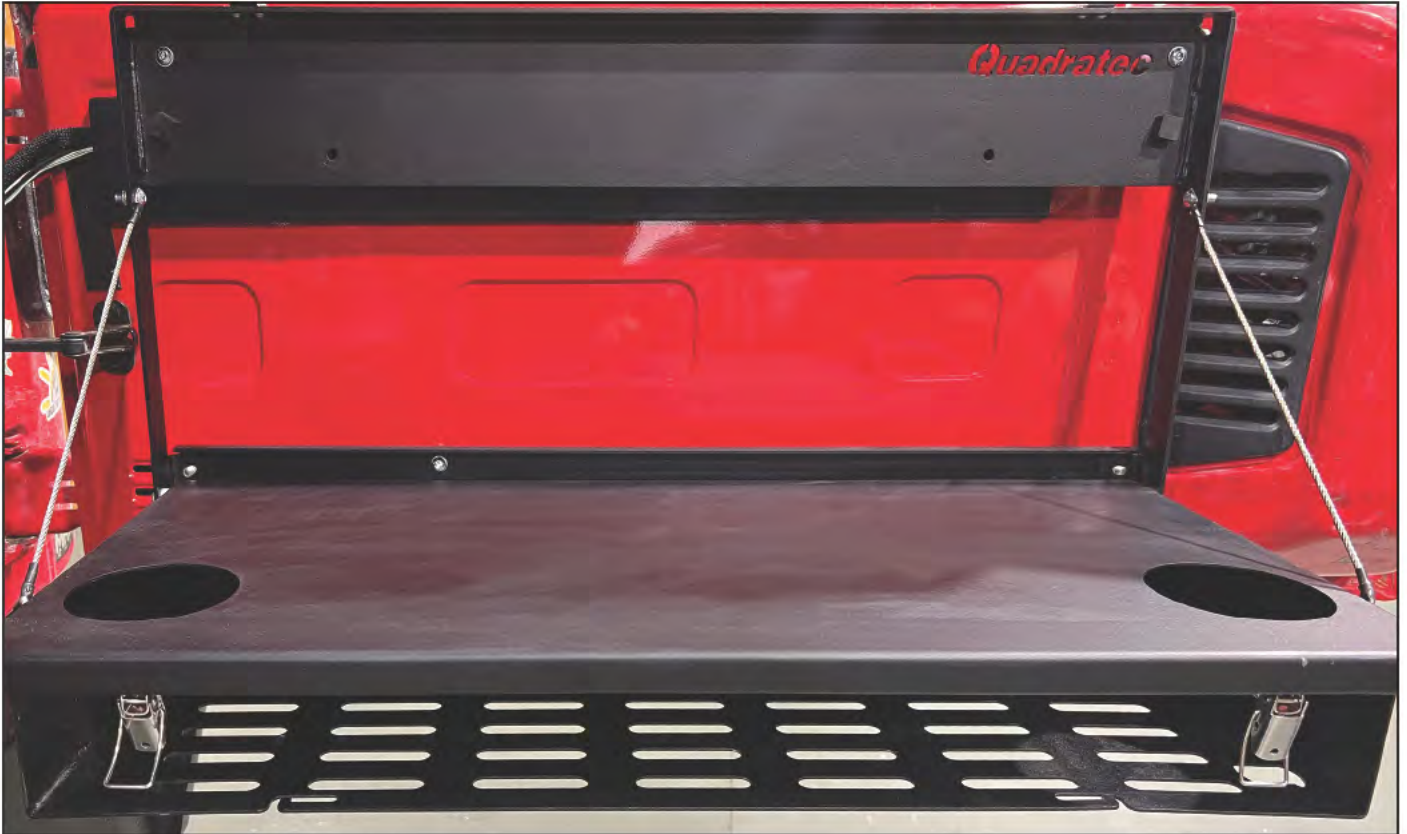


Quadratec® Tailgate Table

Installation Manual: for Jeep Wrangler '07-Current Wranglers #12226.3010



⚠ WARNING ⚠

DO NOT PLACE LARGE OR HEAVY OBJECTS ON THE TABLE. NOT TO BE USED AS A CHANGING TABLE FOR INFANTS OR YOUNG CHILDREN.

⚠ WARNING ⚠

DO NOT USE AS A SEAT OR CHAIR OF ANY KIND

⚠ CAUTION ⚠

DO NOT TO EXCEED WEIGHT LIMIT OF 25 POUNDS.

Quadratec®

A FEW WORDS ABOUT PRODUCT SAFETY:

Your Quadratec Tailgate Table is intended to enhance the utility and enjoyment of your Jeep vehicle. Before installation, please review the following safety information and installation recommendations. Throughout these instructions important safety information is generally preceded by one of the three signal words indicating the relative risk of injury, property damage or adverse consequence.

The signal words mean:

⚠ WARNING ⚠

A HAZARDOUS SITUATION WHICH, IF NOT AVOIDED, COULD RESULT IN DEATH OR SERIOUS INJURY. YOU CAN BE KILLED OR SERIOUSLY HURT IF YOU DON'T FOLLOW INSTRUCTIONS.

⚠ CAUTION ⚠

A HAZARDOUS SITUATION WHICH, IF NOT AVOIDED, COULD RESULT IN A MINOR OR MODERATE INJURY. YOU CAN BE MODERATELY HURT AND ALSO MAY SUFFER PROPERTY DAMAGE IF YOU DON'T FOLLOW INSTRUCTIONS.

NOTICE

CAREFUL ATTENTION IS REQUIRED TO THIS INSTRUCTION OR OPERATION BUT GENERALLY DOES NOT RELATE TO PERSONAL INJURY. DAMAGE TO YOUR RES-Q PRODUCT OR OTHER PROPERTY MAY RESULT IF YOU DON'T FOLLOW INSTRUCTIONS.

BEFORE YOU BEGIN USAGE:

Congratulations on your purchase of the Quadratec Tailgate Table. Your top-quality Tailgate Table mounts directly to your Tailgate of your Jeep Wrangler JK or JL. When unpacking, check to make sure all parts are included and not damaged due to shipping. If any part is missing or broken, please call Customer Service at 800-745-6037 as soon as possible. Thank you again for your purchase.

⚠ WARNING ⚠

TO REDUCE RISK OF SERIOUS INJURY OR PROPERTY DAMAGE: READ ALL SAFETY MESSAGES AND UNDERSTAND ALL INSTRUCTIONS AND PROCEDURE NOTICES BEFORE ATTEMPTING TO INSTALL OR USE THIS PRODUCT.

⚠ WARNING ⚠

DO NOT DRIVE WITH TAILGATE OPEN OR WITH TAILGATE TABLE DOWN AND IN USE.

⚠ WARNING ⚠

ENSURE THAT ALL HARDWARE IS PROPERLY ATTACHED, TIGHTENED AND LOCKED PRIOR USAGE. PERIODICALLY INSPECT HARDWARE TO ENSURE THEY ARE FASTENED SECURELY AND PROPERLY TIGHTENED.

⚠ CAUTION ⚠

RISK OF EYE INJURY! SAFETY GLASSES MUST BE WORN AT ALL TIMES WHILE INSTALLING OR MAINTAINING THIS PRODUCT. DO NOT USE IF DAMAGED.

NOTICE

CLOSE TAILGATE TABLE AND SECURELY LATCH BEFORE CLOSING TAILGATE.

BEFORE YOU USE

KIT CONTENT LIST:

- A. Spacer 7mm x 33.5mm (x1)
- B. Spacer 7mm x 30.5mm (x3)
- C. Rivet Nut (x4)
- D. M6 x 1.0 x 50 Button Head Hex Bolt (x4)
- E. M6 Flat Washer (x4)



TOOL LIST:

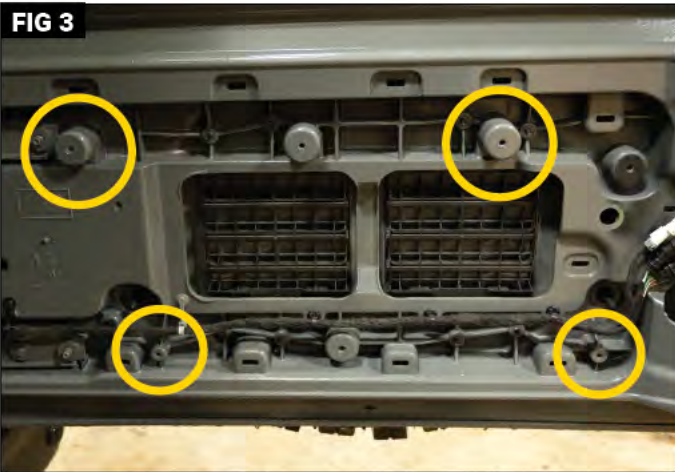
- 4mm Hex Wrench
- 10mm Wrench
- Trim Removal Tool
- Drill w/ 3/8" & 1/2" Bits or Step Bit
- Rivet Nut Insert Tool (JK only)

JL INSTALL INSTRUCTIONS - Step 1



Put on safety glasses. There are two trim pieces on the rear tailgate that need to be removed. The first smaller trim can be removed by careful working a trim removal tool on one side and working around the edges, releasing the clips as you go. (Fig 1) Set this piece aside for use in Step 3. Using the trim removal tool, carefully remove the larger trim piece to reveal the entire framing and mounting points in the tailgate. (Fig 2)

Step 2



The four mounting points for the tailgate table are shown with the yellow circles for reference of all of the holes need to be drilled in each trim piece. (Fig 3) The lower two are used for the larger trim piece. There are two pre-marked drill points on the back of the larger trim piece to match the location of those mount points. Using the drill and 1/2" bit, carefully drill a hole at each of those two drill points. (Fig 4)

Step 3



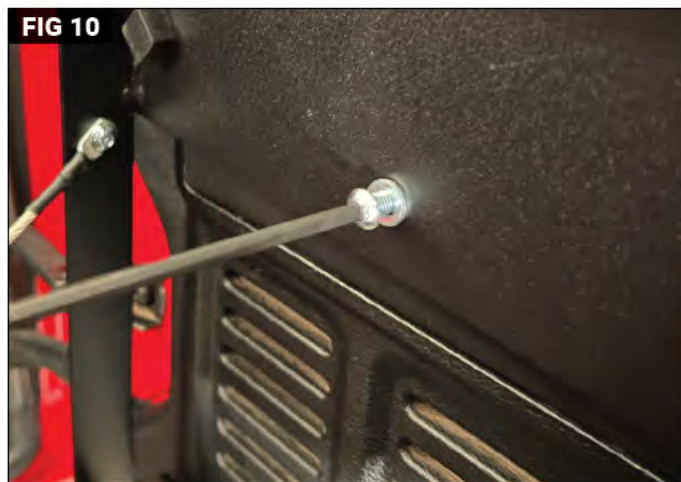
The smaller trim piece has two drill points marked inside two circular raised locations. Drill the holes there. (Fig 5) These line up with the two mount points shown in previous step. (Fig 3) When the trim pieces are reinstalled, there should now be 4 drill holes present to correspond with the marked mounting points from step 2. These are marked with a yellow circle. (Fig 6)

Step 4



Place the 7mm spacers in the drill holes. The longer 33.5mm spacer should be placed in the lower right position. The three 30.5mm will be pushed into the other three locations. (Fig 7 & 8)

Step 5



Hold the tailgate table in the open position against the tailgate and align the upper mounting holes to the mounting points with the spacers inserted. These mounting holes are just above the large opening in the back frame. Insert two of the M6 button head bolts through the M6 flat washers into each of these holes and into the spacers. (Fig 9 & 10) Do not fully tighten at this time.

FIG 11



FIG 12



Close the table and secure the latches. Insert the remaining two M6 button head bolts through the M6 flat washers into each of the lowest holes along the bottom of the back frame and into the spacers. (Fig 11) Tighten all four M6 button head bolts securely. **Note:** Do NOT over tighten bolts. The rivet nuts may begin to spin or pull out if overtightened.

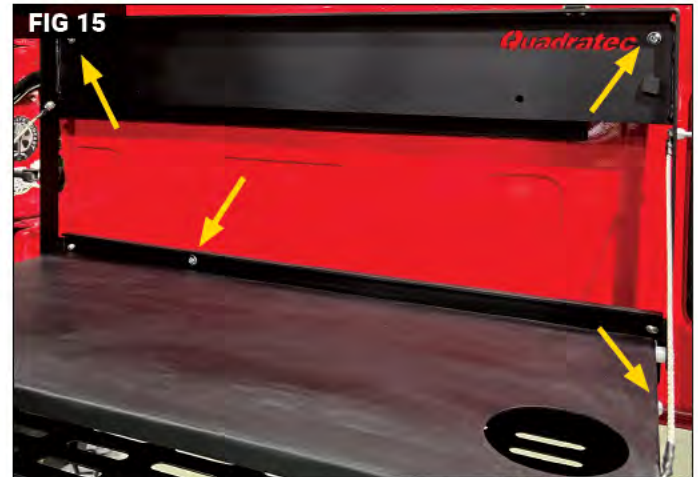
JK INSTALL INSTRUCTIONS - Step 1

FIG 13



Put on safety glasses. Removing the rear tailgate trim piece makes the marking and drilling easier. The trim can be removed by carefully working a trim removal tool or fingers, starting on the bottom left corner. Carefully work under that corner and slide to the left, releasing the clips as you go. (Fig 13) Once all the lower clips have been released, lift the lower portion and pull forward to release the upper tabs from the slots.

Step 2



Marking the tailgate is easier with the table removed by removing the 10mm bolts that hold the cable in place on the back frame. Then, remove the 4mm button head bolts and nylon spacer that acts as the hinge holding the table to the back frame. (Fig14) Save the bolts and spacer. You will need them for Step 8. There are multiple holes in the back frame. These are pre-drilled for use in JL and JK models. Each use different mounting locations. The four holes that need to be marked for JK are shown with the yellow arrows. (Fig 15)

Step 3



Using your free hand or a helper, locate the center of the flat portion of the tailgate by measuring this area and find the halfway point. This will help make your marking more accurate. Then, hold the back frame level against the tailgate and mark the locations that need to be drilled. (Fig 16) Use a center punch to make a dimple to start the drilling process. (Fig 17)

Step 4

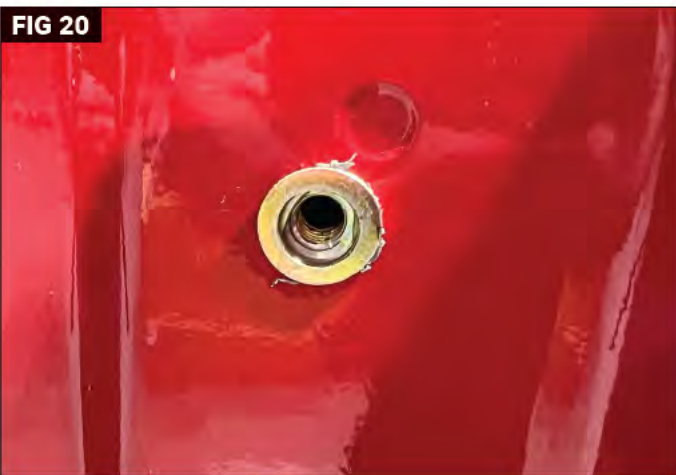


Start with a smaller bit than needed, to drill four pilot holes. Use the full-size 3/8" bit to open the hole to the correct size for the Rivet Nuts (Fig 18). (This can be done with a step bit, as well). Using a Rivet Nut tool, insert a Rivet Nut fully into each of the four holes. (Fig 19) Replace the rear plastic trim piece by inserting the upper tabs first. Then, press in the clips along the bottom.

NOTICE

DO NOT TO ALLOW THE DRILL TO GO TOO DEEP INTO THE INNER WALL OF THE TAILGATE AND CONTACT OUTER WALL OF THE TAILGATE.

Step 5



Check that each rivet nut is fully seated and secure. (Fig 20) Starting on the upper right corner near the Quadratec logo, install the 30.5mm spacer between the back frame and the tailgate. (Fig 21) Place an M6 flat washer on the outside of the frame and loosely thread the M6 Button Head Hex Bolt into the spacer and Rivet Nut. Do not fully tighten at this time.

Step 6



Install the 30.5mm spacer on the upper left corner and lower left mounting hole. (Fig 22) Place an M6 flat washer on the outside of the frame and loosely thread the M6 Button Head Hex Bolt into the spacer and Rivet Nut. (Fig 23) Use the longer 33.5mm spacer for the lower right mounting location. Place an M6 flat washer on the outside of the frame and loosely thread the M6 Button Head Hex Bolt into the spacer and Rivet Nut. Do not fully tighten at this time.

Step 7



Using a 4mm hex wrench, tighten each of the four button head bolt to secure the frame to the tailgate. (Figs 24 & 25)
Note: Do NOT over tighten bolts. The rivet nuts may begin to spin or pull out if overtightened.

FIG 26

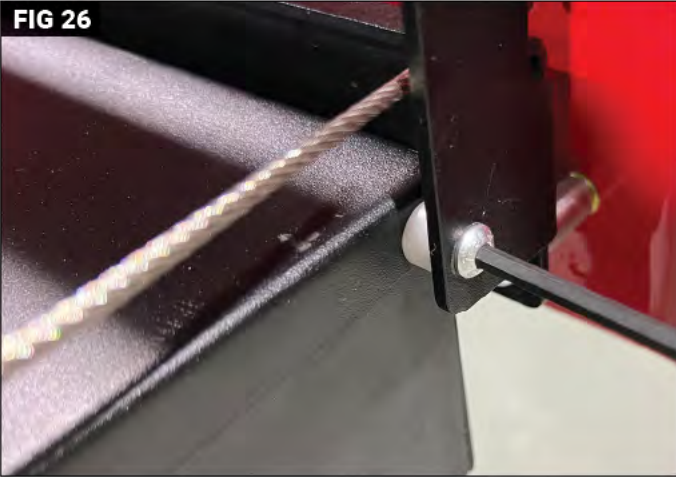
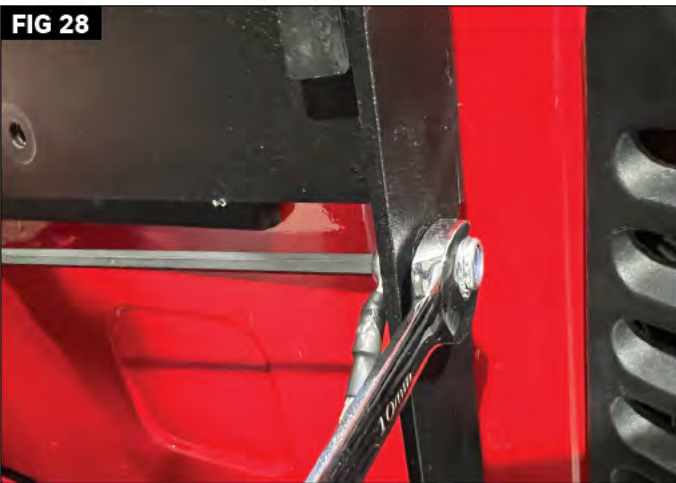


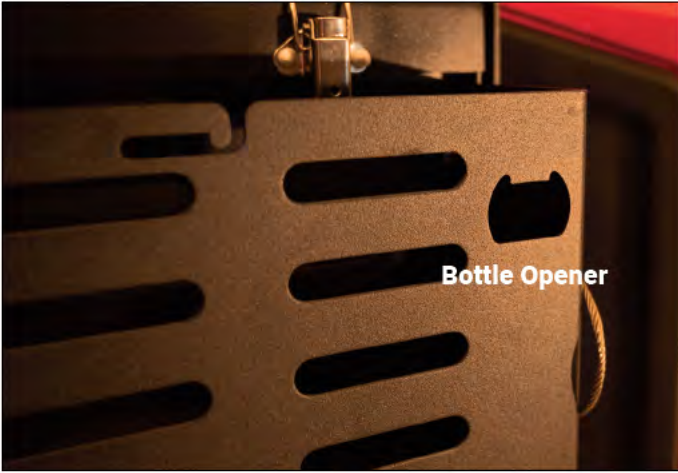
FIG 27



FIG 28



Use the nylon spacers and the shorter 4mm button head hex bolts that were removed earlier in Step 2 to reattach the table bottom to the frame. (Fig 26) Attach the cable to the back frame using the button head bolt, washer and 10mm nut. (Fig 27 & 28)



Quadravec® Exclusive Three Year Limited Warranty

Your Quadravec® branded accessories are covered by the following Limited Warranty provided exclusively by Quadravec, Inc., 1028 Saunders Lane, West Chester PA 19380.

This **Limited Warranty** is the only warranty made in connection with your purchase. Quadravec neither assumes nor authorizes any vendor, retailer or other person or entity to assume for it any other obligation or liability in connection with this product or Limited Warranty. This Limited Warranty does not apply and is not cumulative to any accessory or part distributed by Quadravec for which the Manufacturer provides a separate written warranty.

What is Covered:

Subject to the terms, exclusions and limitations herein and with respect only to Quadravec branded accessories first sold in the United States, Quadravec warrants to the initial retail purchaser only that your Quadravec accessory shall be free of defects in material and workmanship: for a period of three (3) years from date of retail purchase.

This **Limited Warranty** is not assignable and shall terminate upon sale of the vehicle upon which the Quadravec accessory is installed or other transfer to third persons.

All other warranties are hereby disclaimed, except to the extent prohibited by applicable law in which case any implied warranty of merchantability or fitness for a particular purpose on this product is limited to three (3) years from date of initial retail sale. Quadravec reserves the rights to: (a.) **require invoice or other proof your accessory is within the terms of this Limited Warranty as a condition of warranty service and, (b.) make future revisions to this product and Limited Warranty without prior notice or obligation to upgrade your product.**

What is Not Covered:

Your Quadravec Limited Warranty does not cover products or parts Quadravec determines to have been damaged by or subjected to: (a.) **installation damage, alteration, modification, combination with other parts, failure to maintain or improper repair or service, (b.) normal wear & tear, cosmetic damage or damage from moisture or water immersion, (c.) Acts of God, accidents, misuse, negligence, inadequate mounting or impact with vehicle(s), obstacles or other aspects of the environment, (d.) theft, vandalism or other intentional damage.**

Remedy Limited to Repair/Replacement:

The exclusive remedy provided hereunder shall, upon Quadravec inspection and at our option, be either repair or replacement of product or parts (new or refurbished) covered under this Limited Warranty. Customers requesting warranty consideration should first contact Quadravec to obtain a RGA number (610-701-3336). All labor, removal, shipping and installation costs are customer's responsibility.

Other Limitations - Exclusion of Damages - Your Rights Under State Law:

In consideration of the purchase price paid, neither Quadravec nor any independent Quadravec distributor/licensee are responsible for any time loss, rental costs, or for any incidental, consequential, punitive or other damages you may have or incur in connection with any part or product purchased. Your exclusive remedy hereunder for covered parts is repair/replacement as described above.

This **Limited Warranty** gives you specific rights. You may also have other rights that vary from state to state. For example, some states do not allow limitations of how long an implied warranty lasts and /or do not allow the exclusion or limitation of incidental or consequential damages, so the limitations and exclusions herein may not apply to you.

©Quadravec, Inc. 2022. All Rights Reserved.
A4 Version 2/15/2022

Instructions Part #12999.3240