

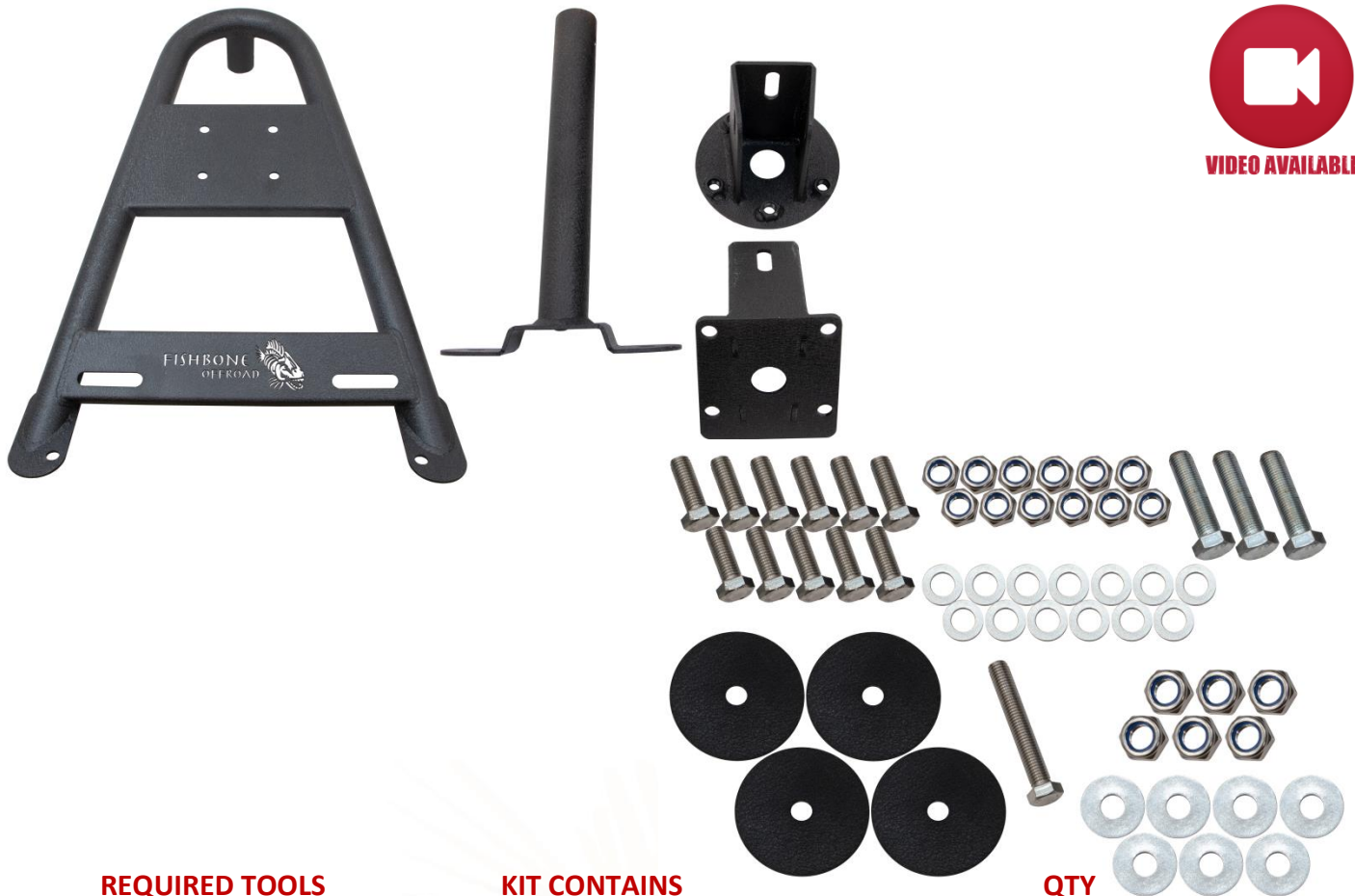


# INSTALLATION INSTRUCTIONS

**PART No.**

**FB21213**

**Jeep® JT Gladiator  
Gladiator In-Bed Tire Carrier**



## REQUIRED TOOLS

- 19MM Socket
- 19MM Wrench
- 21MM Socket
- Drill
- .5" Drill Bit
- Drill Stop
- Paint
- Thread Locker
- Marker
- Help of a Friend

## KIT CONTAINS

- Carrier Frame
- Support Pipe
- Upper Hub Mount
- Lower Hub Mount
- M14 Hex Bolt
- M12 Hex Bolt
- M12x35mm Hex Bolt
- Bed Washer
- M12 Washer
- M12 Oversized Washer
- M12 Nyloc Nut
- M14 Nyloc Nut
- Lug Nuts

## QTY

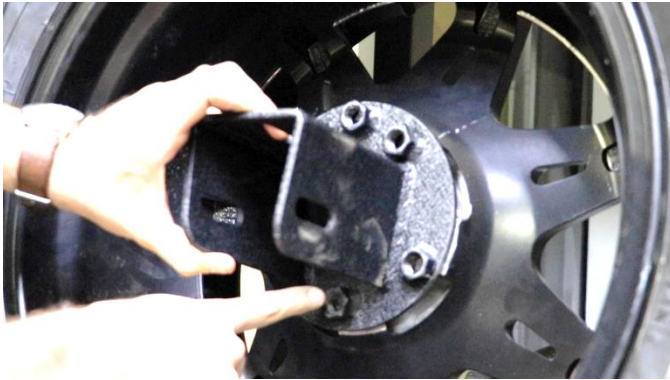
- 1
- 1
- 1
- 1
- 3
- 1
- 11
- 4
- 13
- 7
- 12
- 6
- 3

2121300

## Jeep® JT Gladiator Gladiator In-Bed Tire Carrier

### 1) ASSEMBLE

With the upper hub mount, confirm which holes line up with your tire's lugs.



With the 3 M14 bolts and a 21mm wrench, screw them into the upper mount with thread locker so that they match your lug's pattern.



Begin loosely assembling the hub mount. With three of the M12 bolts, 3 washers, 3 oversized washers, 3 Nyloc nuts, and 2 19mm sockets or wrenches, assemble the hub loose enough so that you are able to pull and push the part to the correct mount size.



Hold the mount up to your tire and adjust its length so that the mounting plate is flush or near flush with the tire, ensuring that it will lie properly on the mount.



Completely tighten down the 3 hex bolts.

With the support pipe and frame, slide the pipe into the frame and line up the holes as shown.

Using the single large bolt, 2 M12 washers, a Nyloc nut, and 2 19mm sockets, secure the two parts together.

### Jeep® JT Gladiator Gladiator In-Bed Tire Carrier



With the hub mount and frame, secure the two with 4 M12 bolts, 4 M12 washers, 4 oversized washers, 4 Nyloc nuts, and 2 19mm sockets.



#### 2) **PLAN THE INSTALLATION**

Place the carrier into the bed of your vehicle.

Take note and special care to ensure that during the installation process, damage to vital components won't occur below the bed, and that the locations underneath have enough clearance for the 4 bed washers.

Place your tire onto the mount and ensure it will rest without any complications.

With a marker, mark the bolt holes to help identify the drill locations.



\*Again, ensure that drilling below these points won't damage vital components\*

#### 3) **DRILL**

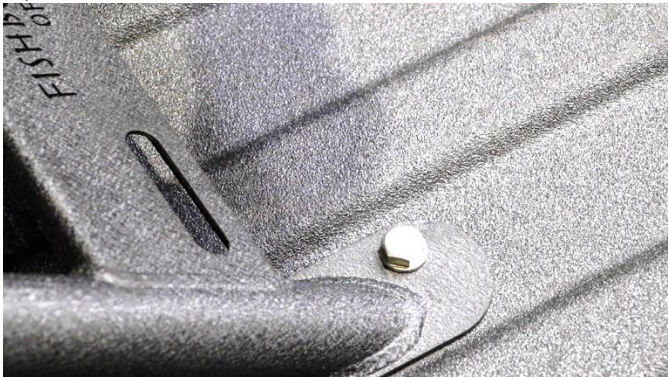
Begin drilling the bed with a drill stop starting with a pilot and working your way up to a .5in bit.



## Jeep® JT Gladiator Gladiator In-Bed Tire Carrier

#### 4) **INSTALL**

Begin securing the carrier to the bed using the remaining M12 bolts, washers, bed washers, and Nyloc nuts.



With the help of a friend, tighten down and secure the carrier with 2 19mm sockets.



Place your tire onto the carrier and secure it with its lug nuts, or the 3 we've provided.



**ENJOY YOUR NEW FISHBONE OFFROAD JT TIRE CARRIER!**

