

ELEMENT SKY VIEW

INSTALLATION INSTRUCTIONS

Congratulations on your purchase of a high quality PUTCO product. Should you need any application or technical assistance, feel free to call us at: 1-800-247-3974

Monday-Friday 8:00 a.m. - 5:00 p.m. (Central Standard Time)

Contact your PUTCO dealer for other quality accessories.

Please read all instructions before installation and to check to see that all parts are included.

CONTENTS:	
Description	Qty.
Element Sky View Roof Panel	1
M8 Bolt	4
M8 Washer	4

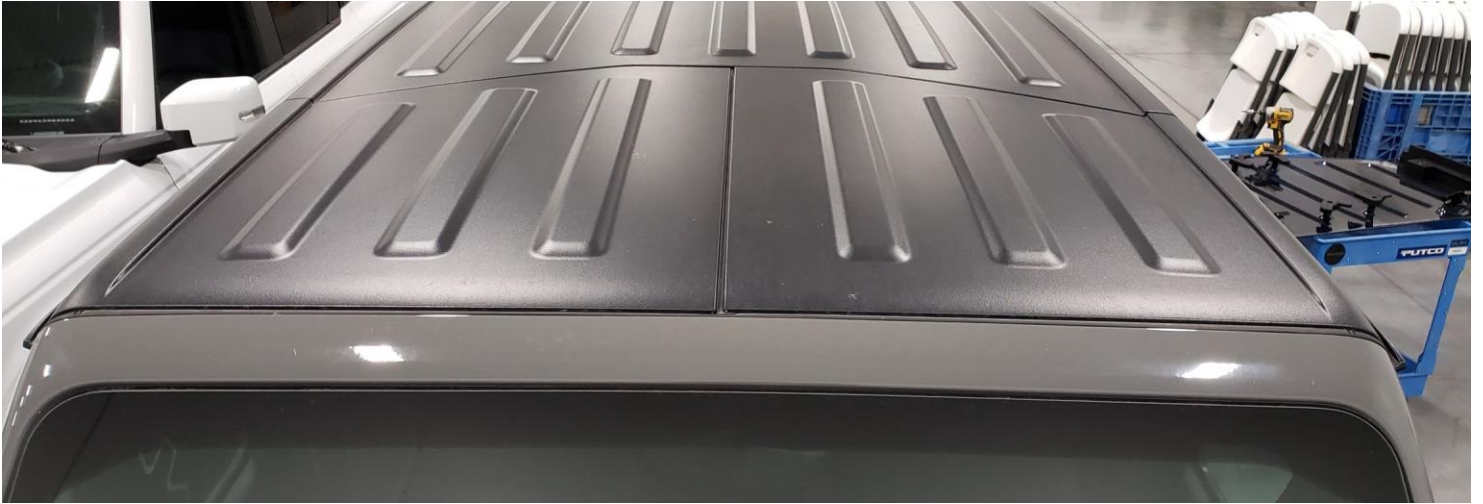
Tools Needed:

- 6mm Hex Key



Installation Instructions:

1. Remove the front section of the factory hard top.

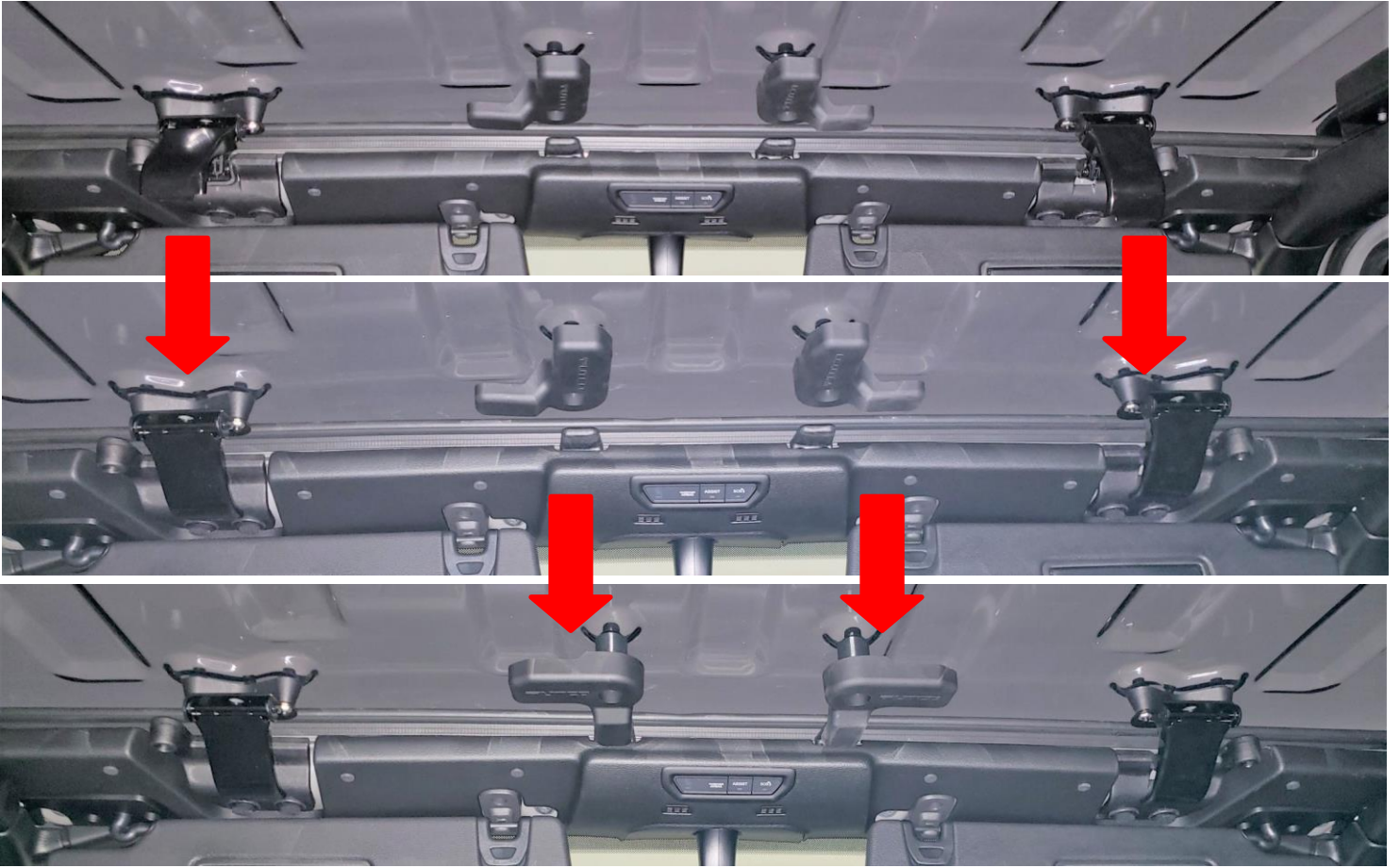


2. Place the Element Sky View panel on the top of the vehicle.



Installation Instructions Continued:

3. Close the two front clamps, . Then close the two front L-shaped clamps.



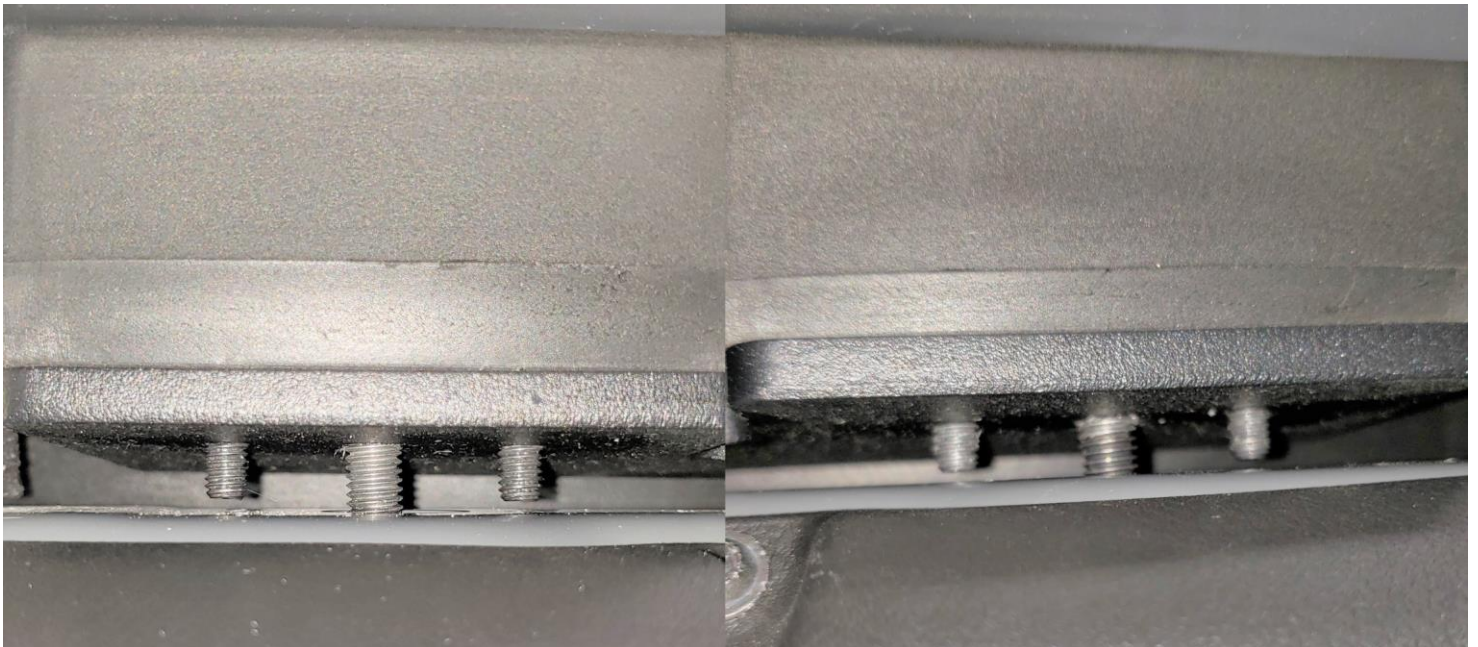
4. Close the rear two L-shaped clamps. (picture pointing to the rear clamps)

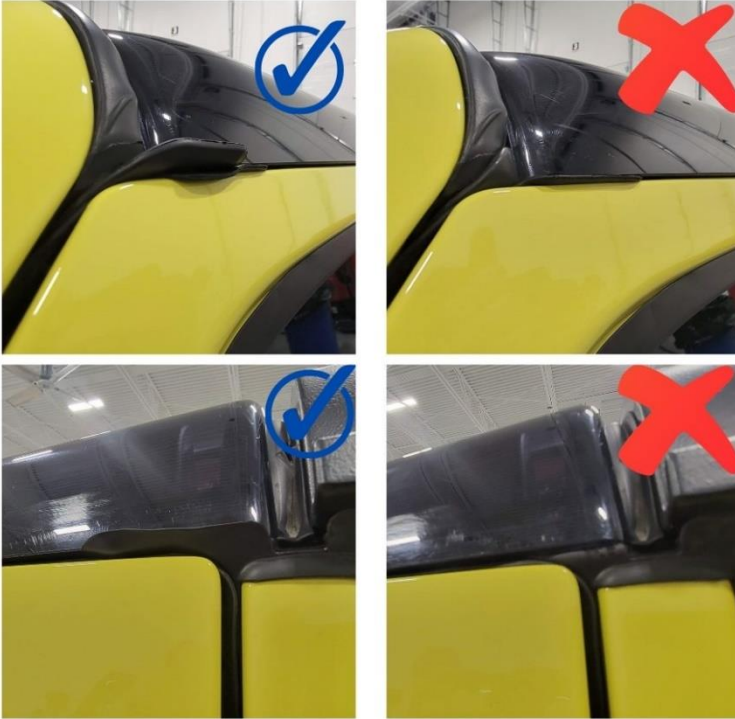


5. Loosely thread the four M8 bolts into the adapter plates.



6. Tighten the M8 bolts leaving a small gap between the Skyview hardware and the roll bar on the vehicle. Do not overtighten.





Important note: Ensure that the factory weather seal on Jeep is sticking out just like it was from the factory freedom panels. Trying to hide the seal by pushing it under the top can compromise the weather-tightness of your Jeep, potentially allowing moisture or other elements to enter. To avoid this issue, make sure the weather seal is properly installed and sticking out as it should be.

Your new Element Sky View Roof is now successfully installed on your vehicle!

CARE INSTRUCTIONS

- Do NOT use chemicals or abrasives on the clear roof panel.
- Use only water and wipe GENTLY with a microfiber towel for cleaning. Applying too much pressure can scratch the Element Sky View roof panel.
- When taking the Element Sky View roof panel through a car wash, use only a TOUCHLESS car wash. The brushes in a regular car wash can scratch the Element Sky View roof panel.

